



**Delta-T Devices**

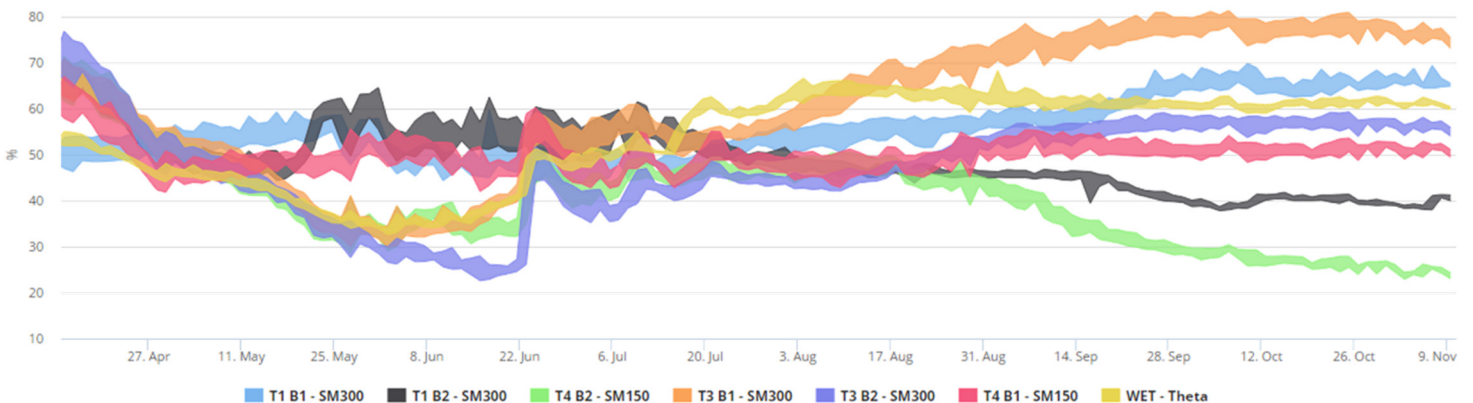
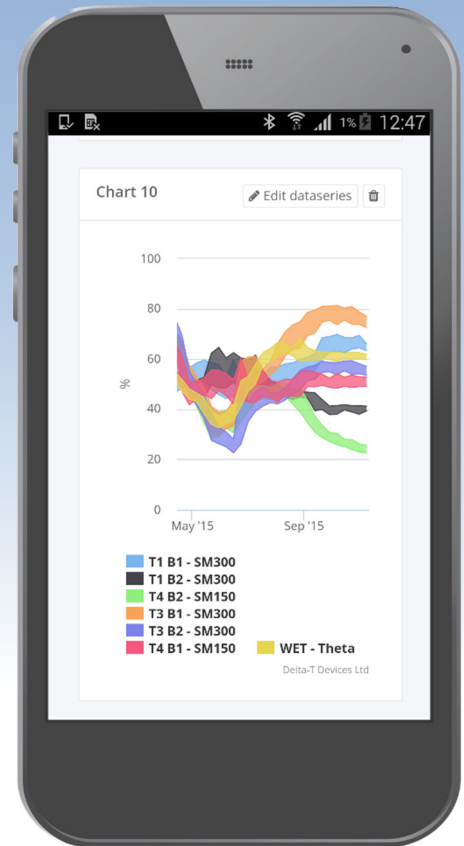
## Sharing Sensor Data

DeltaLINK-Cloud is a free online data viewing and sharing service for Delta-T Devices data loggers. Connect, upload, then monitor, manage and share your sensor data with ease.

- **FREE service**
- **Remote data monitoring**
- **Share data and collaborate**
- **Automatic upload**
- **Mobile, tablet and PC compatible**
- **Flexible charting and reporting**
- **Smart SIM card provided**
- **Secure and encrypted**
- **Multi-language (Fr, De, Es, 中文)**

# DeltaLINK-Cloud

Product Information



**DeltaLINK-Cloud**  
[www.deltalink-cloud.com](http://www.deltalink-cloud.com)



# DeltaLINK-Cloud

**DeltaLINK-Cloud** is a secure cloud based connectivity, data management and automatic data retrieval solution. The website allows a user to monitor the status of their devices, graph and export the uploaded data, share access to data with project collaborators/stakeholders and initiate a reverse channel for use with DeltaLINK. All website functionality comes for free and is accessible from most modern internet capable devices (phones, tablets and computers).

The Delta-T GP2, GP1 and DL6 data loggers can all be connected to DeltaLINK-Cloud using the GPRS modem gateway. Delta-T provides Smart SIM cards for the GPRS modem, enabling us to provide an optimum user experience and support service. Smart SIM cards can connect to multiple providers improving the chance of a stable connection.

Data generated by the data loggers can be charted per logger or aggregated and charted for multiple loggers.



Charting is customisable and can be saved as reports for future use - which can be shared via a link. Using the reverse channel and DeltaLINK the following can be achieved: program, start/stop logging, modify program settings, set the logger's clock or delete a dataset. Device status & errors can also be monitored remotely.

## Try it right now!

Demo Data available online



Visit [www.deltalink-cloud.com](http://www.deltalink-cloud.com) now, register - and you can be experiencing the power of this free cloud based platform **in less than a minute.**

The DeltaLINK-Cloud site features loads of demo data for you to experiment with - illustrating the many features and benefits of using this secure, state-of-the-art data service.

## Getting started in 5 fast easy steps....

1. Visit [www.deltalink-cloud.com](http://www.deltalink-cloud.com)
2. To register - click on the **“Create an account”** button, and input required fields.
3. The dashboard screen has three sections – **Manage devices, Datasets and Reports.\***

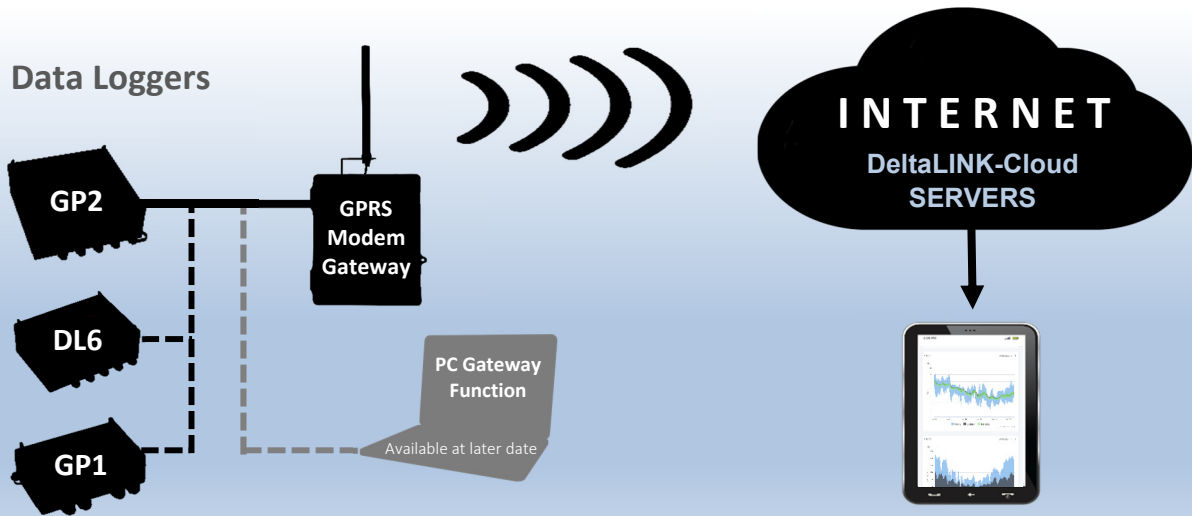
**There are demo reports and live datasets for you to explore.**

4. To access the reports section, click on the **“Reports”** button. Then click on the **“View report”** button to view the charted data.
5. To zoom in and out on the data - *click and drag* horizontally on the charts (mouse) or *pinch and stretch* horizontally (touch screens).



\* There is a “Help” option in the top right hand of screen.

## The DeltaLINK-Cloud Solution

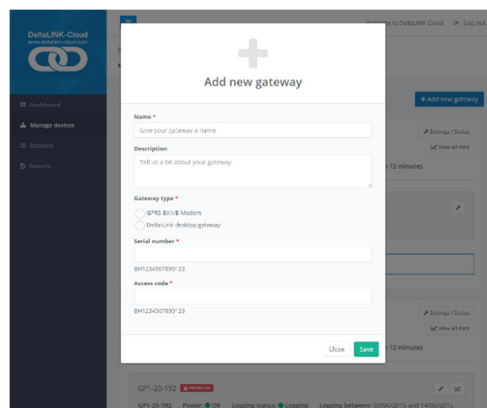


## Key Features

- **Free service** – Use of the website is totally free. (Purchasing of a GPRS modem and data charges will apply if using that option).
- **Collaborative** – Enables online sharing of data via a shared link.
- **Manage all loggers in one place** – With DeltaLINK-Cloud you can bring the management, monitoring and sharing of your loggers and data into one convenient free-to-use portal.
- **Mobile devices (responsive website)** – The website has been designed to work on the latest smart devices as well as desktops. It is compatible with smart phones, tablets, laptops and desktop devices.
- **Report creation and sharing** – Users can add and remove charts, and create custom reports for their data (single or multiple datasets). These can be saved and easily shared with colleagues.
- **SIM card provided by Delta-T Devices** – This makes the cost of the SIM card lower, and enables easier set-up. Our SIM cards will also be able to connect to multiple providers - increasing the reliability and availability of connections.
- **Secure and encrypted** – The latest best practices for security have been employed in the creation of DeltaLINK-Cloud and the website is only accessible through an SSL (encrypted) connection.

## Setting-up the GPRS Modem Gateway

1. Purchase GPRS modem, Smart SIM and data plan
2. Connect logger to modem
3. Power-up logger and modem
4. Check modem lights are flashing correctly
5. Log on to DeltaLINK-Cloud  
[www.deltalink-cloud.com](http://www.deltalink-cloud.com)
6. Add modem gateway and data logger to DeltaLINK- Cloud



Add gateway screen

7. Set-up complete



## Compatible Products



### GP2 Data Logger

A powerful 12 channel data logger that is easy to use, versatile, rugged and reliable. It can log most sensor types and accepts SDI-12, voltage, resistance, current, potentiometer, bridge, counter, frequency, and digital state inputs.



### DL6 Data Logger

The DL6 Data Logger can be used with combinations of ThetaProbes, Profile Probes and SM300 Soil Moisture Sensors, and also accepts rain gauge and soil temperature inputs.



### GP1 Data Logger

The GP1 Data Logger supports a full range of 0 to 2.5 V environmental sensors. For soil moisture applications the GP1 is ideal for logging up to 2 ThetaProbes, 4 SM300s or 4 SM150s.



### WS-GP2 Weather Station

The advanced WS-GP2 Automatic Weather Station is based on the powerful GP2 Data Logger. It is an ideal solution for research and environmental monitoring applications. The WS-GP2 provides a highly rugged and flexible system - users can select the optimal combination of sensors, logger, power and communications.

### WS-GP1 Weather Station

The WS-GP1 is an affordable weather station supplied as a ready-to-use package. Based on the GP1 Data Logger, the system includes high grade sensors to measure rain, solar radiation, wind speed, wind direction, relative humidity and air temperature, all mounted on a 2m tripod mast.

